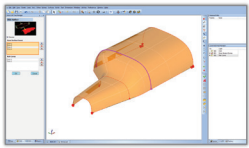


### What's New in BobCAD-CAM V30

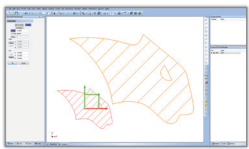


#### 1 Enhanced CAD Picking

- All selected geometry items are now displayed with list boxes
- List boxes have the controls to delete geometry, reverse chains and adjust the order of selected geometry

#### Benefits

Easier way to edit and correct selections for design.

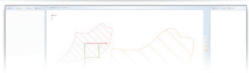


#### 2 Multiple Enhanced CAD Functions

- Single click chain picking for chamfering and filleting
- New Sharp Corner Offset option
- New multi-line text alignment options (left, center or right)
- New Scale Sketch Handle tool for adjusting part sizes

#### Benefits

Dramatically speeds up design work.

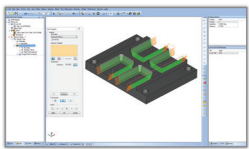


#### 3 Measure Tool Enhancements

- Measure directly off edges, vertices and snap points on solids and surfaces
- Graphical flags show dimensions right inside the CAD window

#### Benefits

Quicker, easier way to inspect your 3D designs.

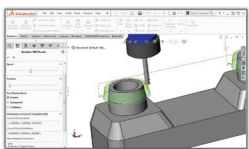


#### 4 Toolpath Editor

- Complete control over editing toolpaths
- Move, Delete, Break, Trim and Relink toolpath entities
- Modify feed rates on toolpath entities
- Replace portions of the toolpath with user drawn CAD geometry!

#### Benefits

Unsurpassed control over all aspects of the toolpath.

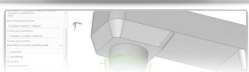


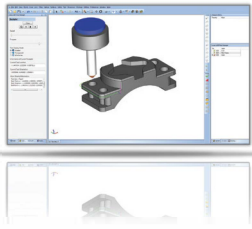
#### 5 Enhanced Selection Tools for Machining Features

- Select geometry and set the direction of cut, top of feature and depth all in one dialog

#### Benefits

Better, more streamlined programming workflow.



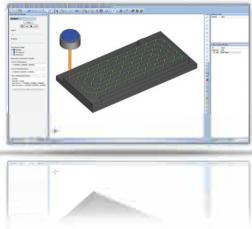


## 6 Geometry Extension and Trimming for 2 Axis Machining

- Extend out or trim back your open profiles

### Benefits

Make common adjustments to the cutting geometry without using a CAD tool.

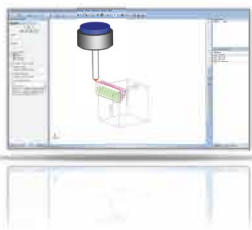


## 7 Multiple Drill Sorting Options

- New X, Y, and custom direction sequencing options
- New Reverse Each Operation option to track back along the path of the first operation
- Manually select geometry or let BobCAD-CAM find the next closest hole

### Benefits

Improved drilling efficiency and reduced cycle times.

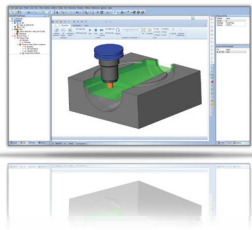


## 8 Multi-Depth Chamfer Cutting

- Machine chamfers that are too large for your chamfer tool
- Utilize step downs and step overs to machine larger chamfers
- Sorting options for machining with step over or step down first

### Benefits

Use any size chamfer tool to cut any size chamfer.

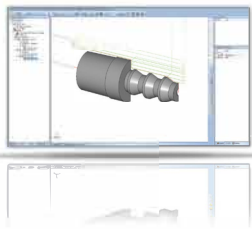


## 9 Multiple Enhancements to the 3 Axis Pro Toolpaths

- Gouge check the holder against the in-process stock as the tool is cutting with new Dynamic Holder Collision Avoidance
- New Arc Leads option for Advanced Rough and Adaptive High Speed toolpaths

### Benefits

More control over the tool and smoother material entries and exits.



## 10 Lathe Toolpath Trimming to Stock and Stock Tracking

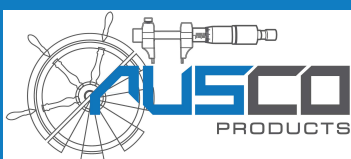
- Trim to Stock for trimming away unwanted portions of the toolpath
- Stock Tracking to automatically update the operation stock
- New Maintain Tilt option

### Benefits

Faster toolpath programming and reduced cycle times.

Explore the full list of new features in **BobCAD-CAM V30** and download a free demo at [www.bobcad.com](http://www.bobcad.com).

BobCAD-CAM develops advanced CAD/CAM solutions that allow anyone, regardless of experience level, to manufacture parts with the power to change the world. So whether you're a leading manufacturer or new to machining, BobCAD-CAM has the features, training, and support you need to produce more parts, faster and easier, for less.



273 Camboon Road Malaga WA 6090 Australia E:

[info@auscoproducts.com.au](mailto:info@auscoproducts.com.au)

T: (08) 9248 5077

[WWW.BOBCAD.AUSCOPRODUCTS.COM.AU](http://WWW.BOBCAD.AUSCOPRODUCTS.COM.AU)

